

Oboe d'amore I

# Sei Lob und Ehr dem höchsten Gut

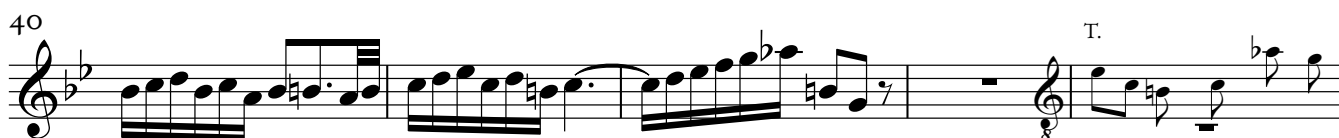
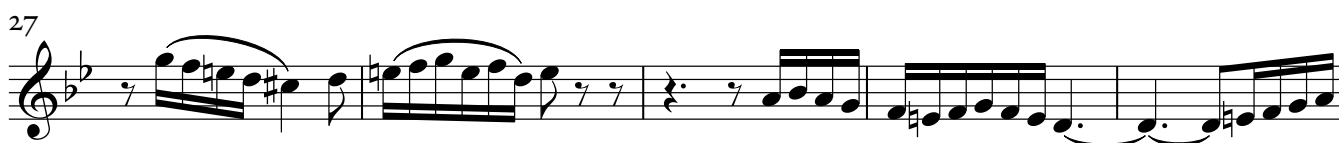
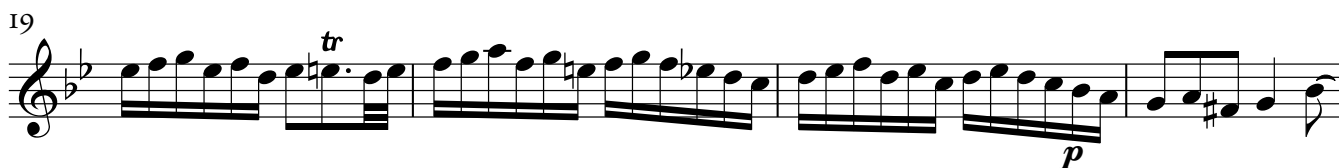
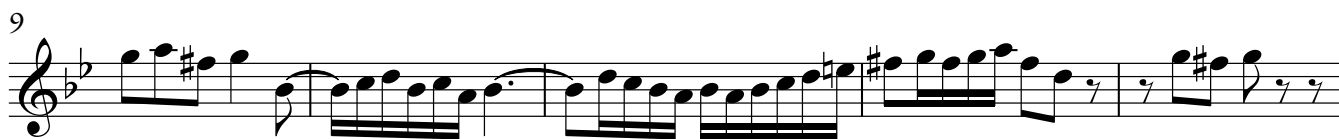
BWV 117

Ohne Bestimmung (Trauung?)

3. Aria - Versus 3

Was unser Gott geschaffen hat, das will er auch erhalten; darüber will er früh und spat mit seiner Gnade walten.  
In seinem ganzen Königreich ist alles recht und alles gleich. Gebt unserm Gott die Ehre!

Johann Sebastian Bach



Al - les gleich, Al - les,

Oboe d'amore I

45

Al - les gleich. *f* *p*

50

55

*f*

59

63

Detailed description of the musical score: The score is for Oboe d'amore I, starting at measure 45. The key signature has one flat (B-flat), and the time signature is 3/4. The music is in a melodic style with various dynamics and articulations. Measure 45 starts with a fermata on a quarter note, followed by a series of eighth notes. The dynamic is *f* (forte). Measure 46 has a fermata on a quarter note, followed by a series of eighth notes. The dynamic is *p* (piano). Measure 47 has a fermata on a quarter note, followed by a series of eighth notes. Measure 48 has a fermata on a quarter note, followed by a series of eighth notes. Measure 49 has a fermata on a quarter note, followed by a series of eighth notes. Measure 50 has a fermata on a quarter note, followed by a series of eighth notes. Measure 51 has a fermata on a quarter note, followed by a series of eighth notes. Measure 52 has a fermata on a quarter note, followed by a series of eighth notes. Measure 53 has a fermata on a quarter note, followed by a series of eighth notes. Measure 54 has a fermata on a quarter note, followed by a series of eighth notes. Measure 55 has a fermata on a quarter note, followed by a series of eighth notes. Measure 56 has a fermata on a quarter note, followed by a series of eighth notes. Measure 57 has a fermata on a quarter note, followed by a series of eighth notes. Measure 58 has a fermata on a quarter note, followed by a series of eighth notes. Measure 59 has a fermata on a quarter note, followed by a series of eighth notes. Measure 60 has a fermata on a quarter note, followed by a series of eighth notes. Measure 61 has a fermata on a quarter note, followed by a series of eighth notes. Measure 62 has a fermata on a quarter note, followed by a series of eighth notes. Measure 63 has a fermata on a quarter note, followed by a series of eighth notes.